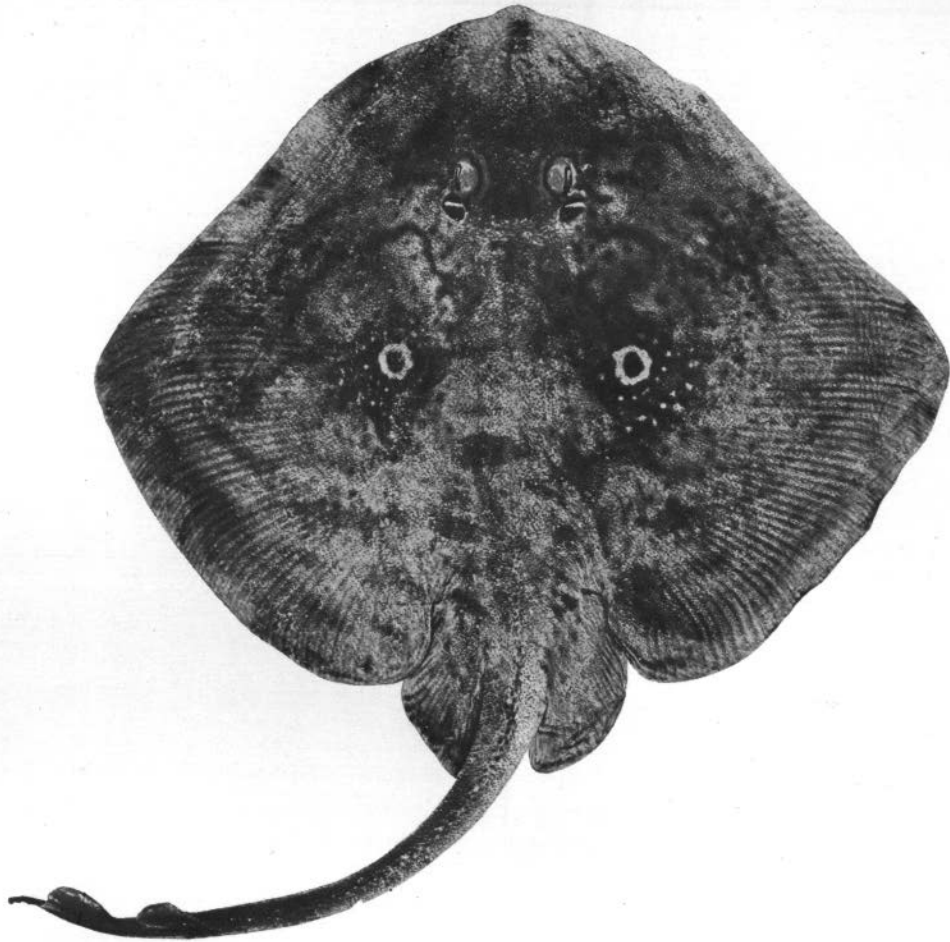


SELACHII
Hypotremata-Raiidæ

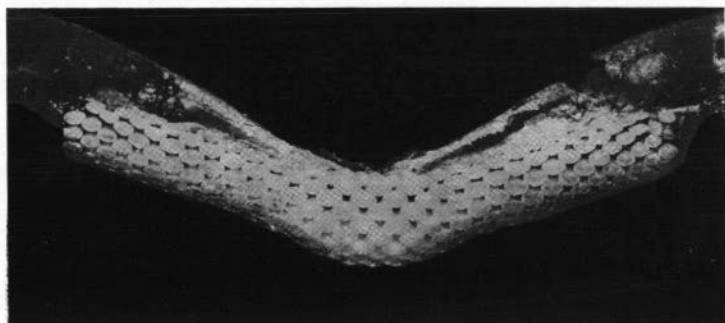
Raia radula

DELAROCHE 1809.



1. Female from Malta. Width of disc 221 mm.

DIAGNOSIS — A small species. Maximal observed length 64 cm. *Disc* : width 63 to 69 per cent. and length 51 to 54 per cent. in total length of fish ; anterior margin almost convex or slightly undulated ; outer angle obtuse and rounded. *Snout* obtuse, hardly projecting, its length about 5 times in width of disc and 2.3 to 2.8 times the inter-orbital width which is equal to or slightly greater than the longitudinal diameter of the eye. *Teeth* obtuse in females ; pointed (middle series) in males ; 36 to 42 rows in upper jaw. *Upper surface* entirely covered with slender spinulae or with naked patches on the wings. A few small spines in front and behind the eye but often hardly distinguishable from spinulae. A median series of 3 or 4 small nuchal spines. A series of small spines along the median crest. These may be restricted to the posterior part of the disc or may be wanting on the body. Tail with an irregular median series, often in duplicate and with an irregular and incomplete lateral series. Dorsals separate ; with or without



2. Teeth of female. Width of disc 221 mm.

intervening spines. *Colour* variable: yellowish brown with dark and light spots and undulating bands or uniform brown. Usually an alar ocellus with dark centre and distinct yellow ring, surrounded by a dark patch with yellow spots aggregated in the form of a circle. A subsidiary ocellus may be present on each wing. *Lower surface* smooth and white. Tail margins spinulose. Brown patches sometimes present on the tail. Life-history not known.

DISTRIBUTION — Mediterranean shallow to moderate depths.

SYNONYMY

R. atra Müller y Henle 1838, *R. quadrimaculata* Pietschmann 1906.

LITERATURE

1809. — DELAROCHE, M. Sur des Poissons recueillis dans un voyage aux Iles Baléares et Pythiuses. *Ann. Mus. d'Hist. Nat.* XIII.
1926. — CLARK, R. S. Rays and Skates. A revision of the European Species. *Fisheries, Scotland, Sci. Invest.*, 1926, I.
1928. — REY, Luis Lozano. *Fauna Iberica, Peces.*

R. S. CLARK 1931.