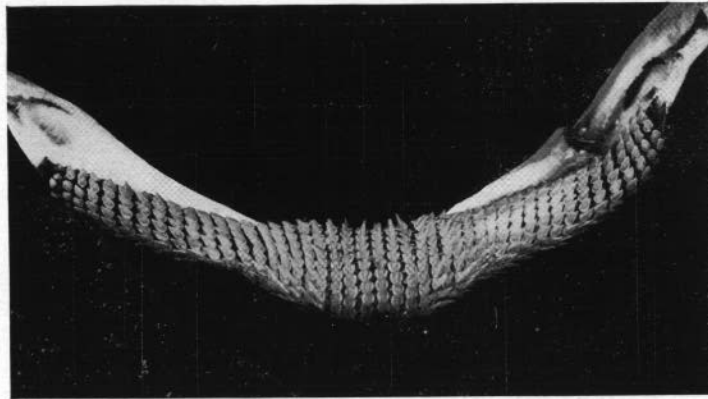


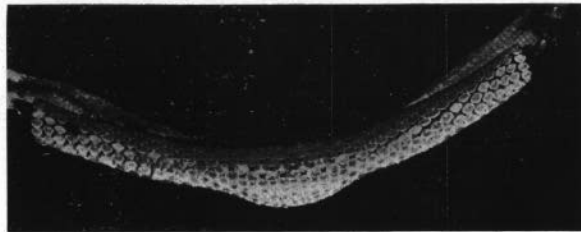
EXPLANATION OF FIGURES

1. Adult male from Malta. Width of disc 255 mm.
2. Adult female from Naples. Width of disc 242 mm.

DIAGNOSIS — A small species which probably reaches 50 cm. in total length. *Disc*: width greater than length: its length 49 per cent and width 60 to 63 per cent in total length of fish; anterior margin undulated. *Snout* acutely pointed and projecting, its length 5 to 5.7 times in width of disc and 4 to 4.5 times the interorbital width which is less than the



3



4

EXPLANATION OF FIGURES

3. Teeth of adult male.
4. Teeth of adult female.

longitudinal diameter of the eye. Praeor al length about twice the internasal width. Dorsals separate. *Teeth* obtuse and flat in females; acutely pointed in males; 40 to 42 rows in upper jaw. *Upper surface*: spinulae occur on tip of snout and extend along the anterior margin of disc almost to the outer angle. Orbital spines present as 2 to 4 prae- and 2 to 3 post-orbital. Usually 2 median nuchal spines. Body otherwise smooth except in males which have 2 to 3 rows of alar spines and a patch of malar spines. Tail with a median series of 14 to 18 spines to the first dorsal and usually 2 spines between the dorsals. Males with a single series of spines on each side of the tail and females with a double series proximally. Colour reddish brown with small dark spots. An ocellus on each wing with a light blue centre surrounded by an inner ring of dark blue and an outer ring of orange or yellow. *Lower surface* entirely smooth in females but with praeoral area spinulose in males. Colour white. *Egg capsule* and young stages not known.

DISTRIBUTION — Mediterranean and neighbouring parts of the Atlantic, northwards to the French coast (Moreau) and southwards off the West African coast to Cape Colony.

SYNONYMY — *R. quadrimaculata* Bonaparte (Plate 63) 1841.

LITERATURE

1758. — LINNAEUS. *Systema Naturae*. Ed. X, t. 2.
1926. — CLARK, R. S. Rays and Skates. A revision of the European Species. *Fisheries, Scotland, Sci. Invest.* 1926. I.
1928. — REY, Luis Lozano. *Fauna Iberica, Peces*.

R. S. CLARK. — Feb. 1931.