



**A few sea level records of the tsunami waves following the 9M
earthquake (on the East coast of Japan, on 11 March 2011)**

Compiled by

Dov S. Rosen

**CIESM MedGLOSS Programme Coordinator (<http://medgloss.ocean.org.il>)
Co-Chair, ICG/NEAMTWS WG3 on Sea Level Data Collection and Exchange**

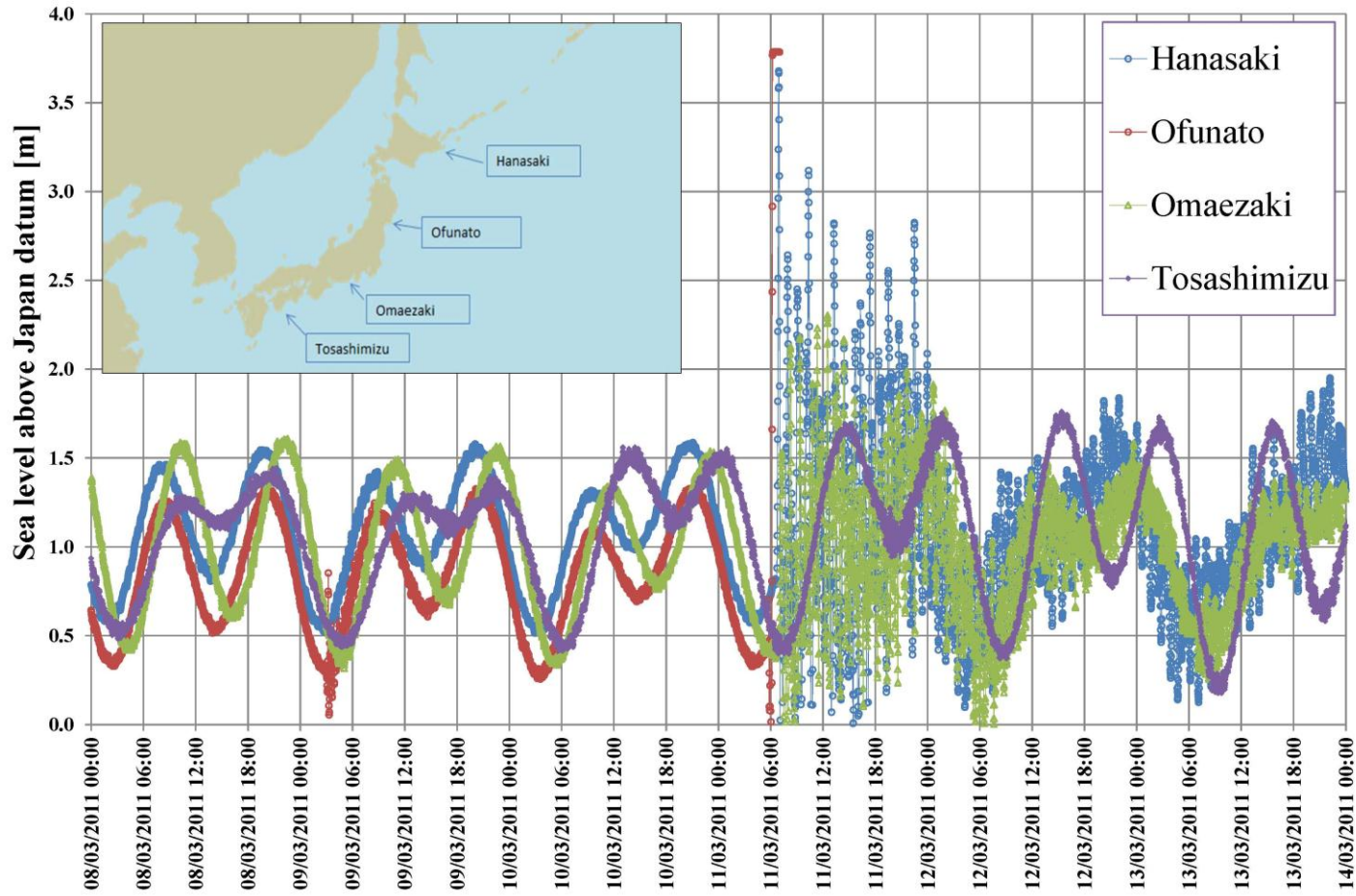
**Israel Oceanographic & Limnological Research (IOLR)
Tel Shikmona, Haifa, Israel, email: rosen@ocean.org.il**

(http://www.ioc-tsunami.org/index.php?option=com_content&view=article&id=10&Itemid=14&lang=en)

<u>Magnitude</u>	9.0
<u>Date-Time</u>	Friday, March 11, 2011 at 05:46:23 UTC Friday, March 11, 2011 at 02:46:23 PM at epicenter Time of Earthquake in other Time Zones
<u>Location</u>	38.322°N, 142.369°E
<u>Depth</u>	32 km (19.9 miles) set by location program
<u>Region</u>	NEAR THE EAST COAST OF HONSHU, JAPAN
<u>Distances</u>	130 km (81 miles) E (86°) from Sendai, Honshu, Japan 179 km (111 miles) ENE (68°) from Fukushima, Honshu, Japan 188 km (117 miles) SE (145°) from Morioka, Honshu, Japan 376 km (234 miles) NE (37°) from TOKYO, Japan
<u>Location Uncertainty</u>	horizontal +/- 13.5 km (8.4 miles); depth fixed by location program
<u>Parameters</u>	NST=350, Nph=351, Dmin=416.3 km, Rmss=1.46 sec, Gp= 29°, M-type=centroid moment magnitude (Mw), Version=A
<u>Source</u>	USGS NEIC (WDCS-D)
<u>Event ID</u>	usc0001xgp

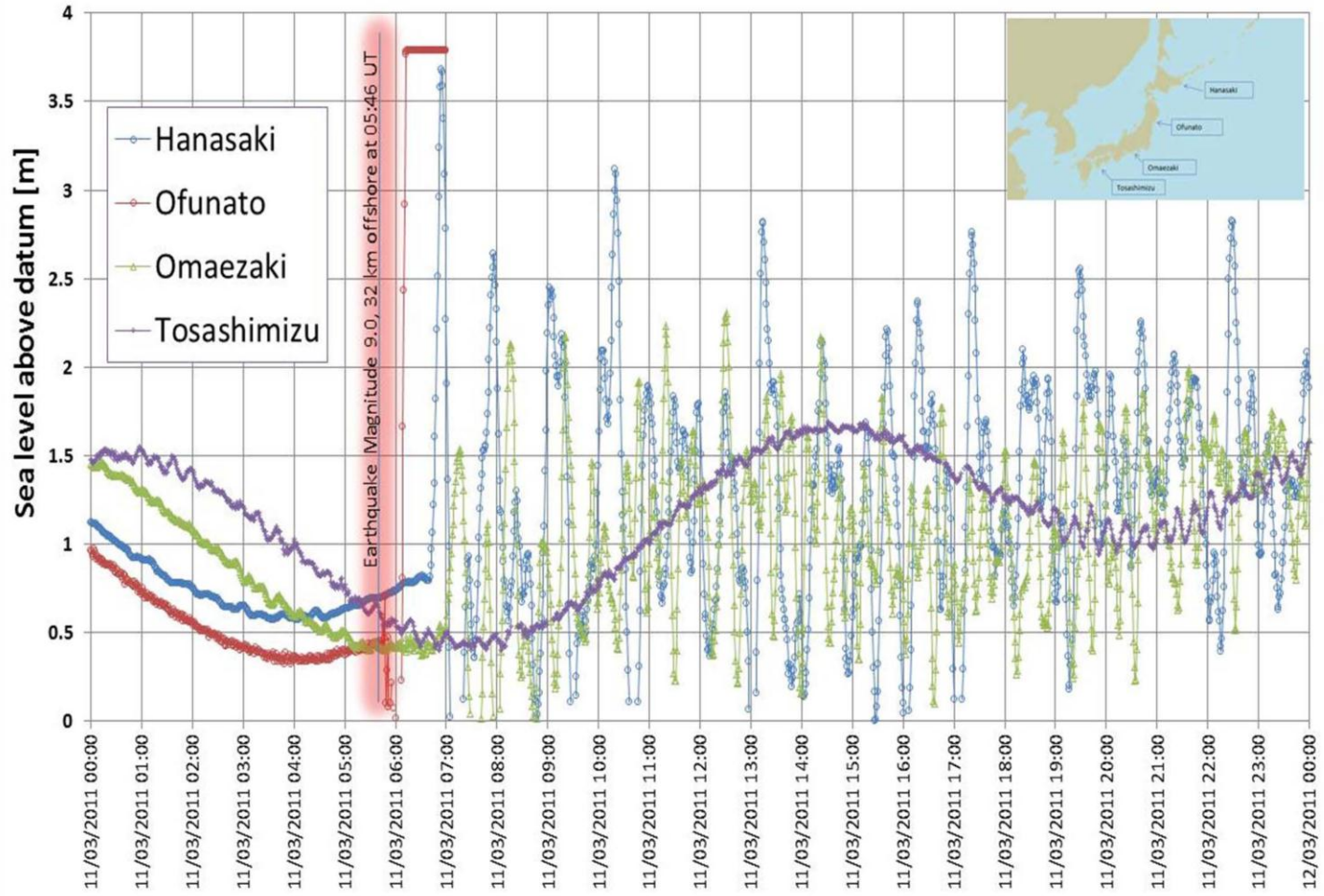


Japan 2011/03/11 Tsunami waves event shown by Japanese sea level recorders
Prepared by Dov S. ROSEN, IOLR, Haifa, ISRAEL 16-3-2011



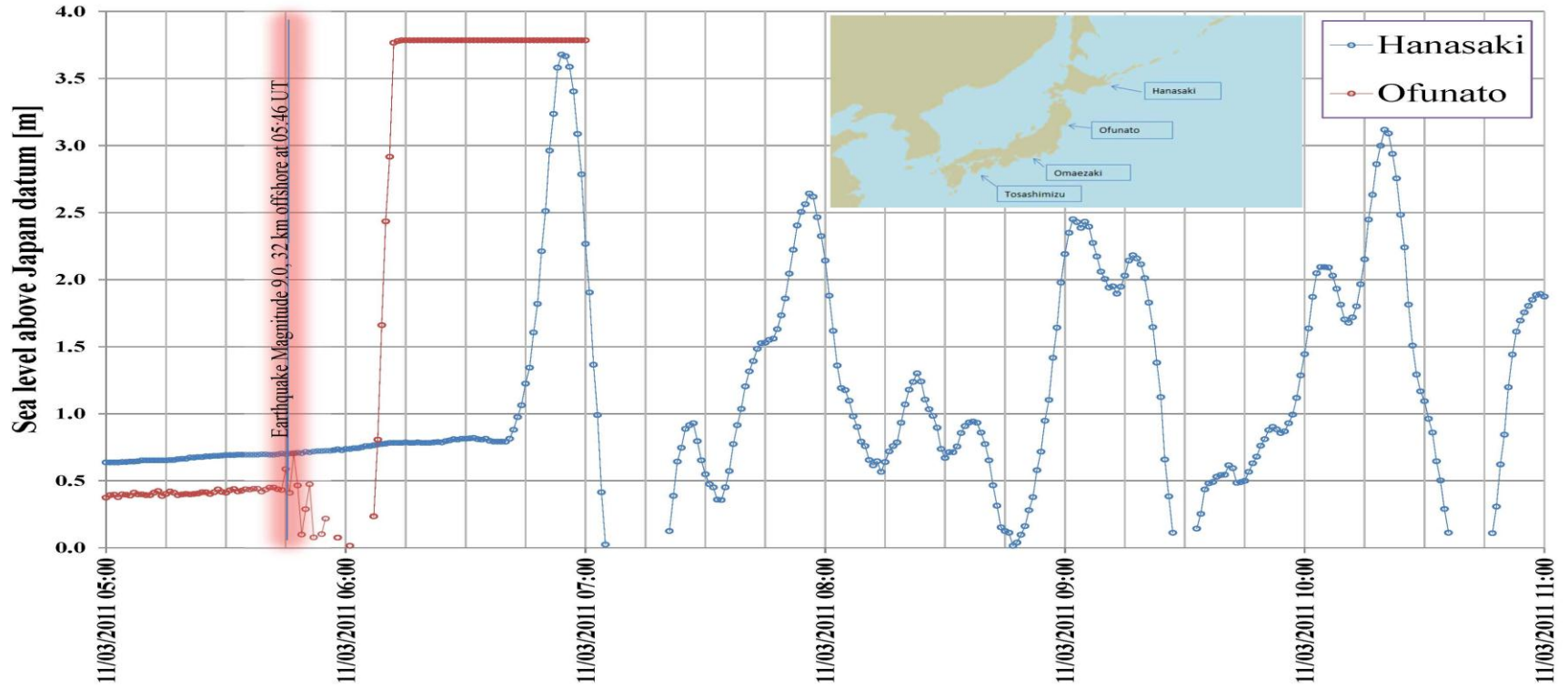


Japan 2011/03/11 Tsunami waves shown by Japanese sea level recorders





Japan 2011/03/11 Tsunami waves event shown by Japanese sea level recorders Prepared by Dov S. ROSEN, IOLR, Haifa, ISRAEL 16-3-2011





A few comments on the data shown

1. The data are taken from four Japan 1 minute sea level stations
2. The station at Ofunato, closest to the epicentre, first recorded a recess of the water level and was destroyed immediately therefore by the first wave
3. The first tsunami wave reached Ofunato, close to shore, about 20 minutes after the quake event
4. There were a number of tsunami waves, with an approximate period of 60 minutes
5. The tsunami wave at Hanasaki started by a water level rise